

Information for Away Fans with Disabilities and Mobility Issues

Partick Thistle v Stranraer

Premier Sports Cup

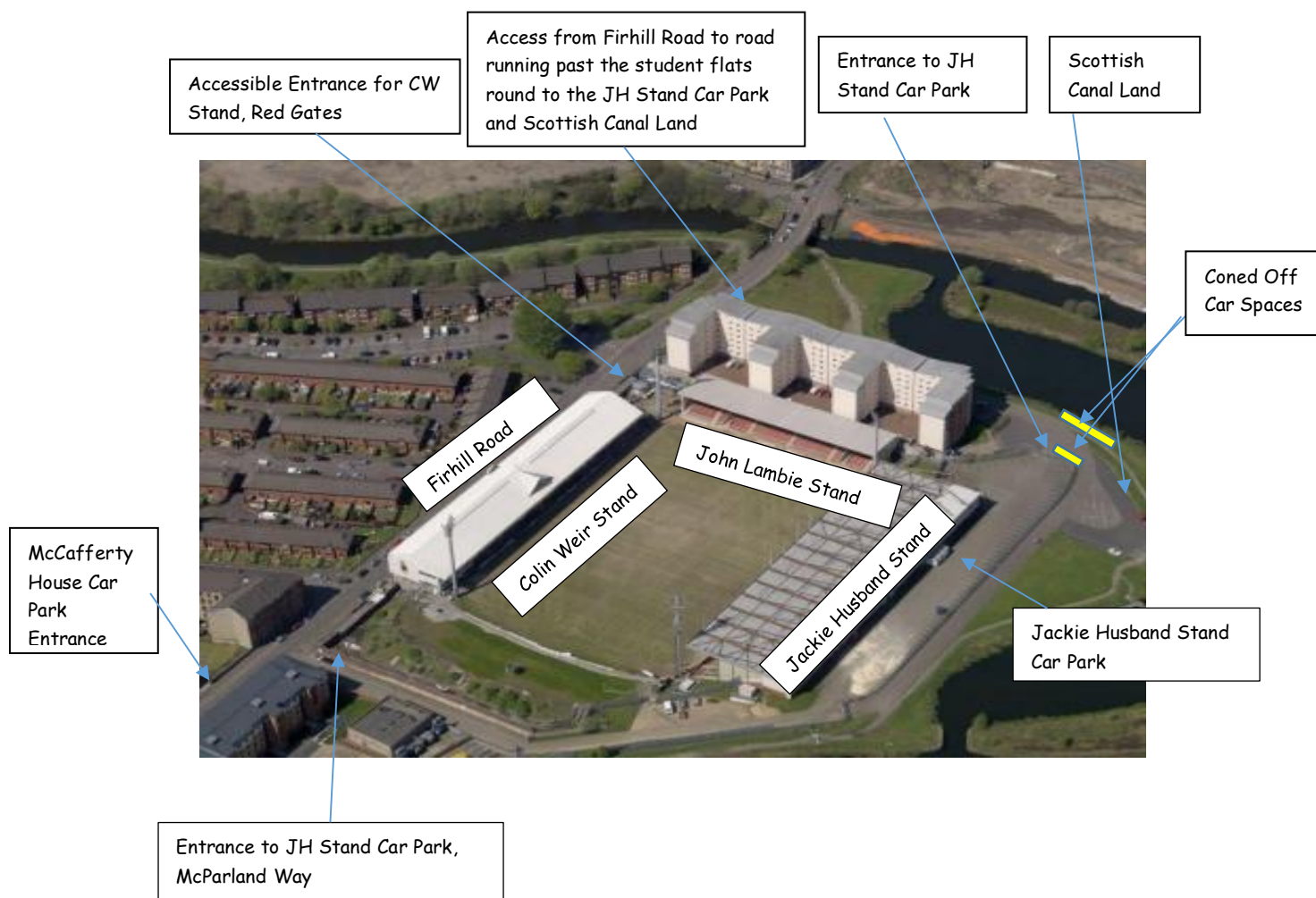
The Wyre Stadium at Firhill

Tuesday 15th July 2025 Kick off 7.45pm

Stands

For this match, away fans will be in Sections 8 and 9 of the Jackie Husband Stand. The front section of the Colin Weir Stand will also be open for home and away fans with disabilities and mobility issues.

Please note that the main seated area of the Colin Weir Stand will not be open to the public.



Tickets

The price of tickets is as follows:

Adult: £15

Concession (under 16, over 65, fan with disability including carer): £10

Junior (under 16): £5

Tickets are available to purchase online using Partick Thistle's Fanbase ticketing platform at:

<https://app.fanbaseclub.com/Fan/Tickets/SelectType?fixtureId=5916>

However carer tickets are not available online. They can be purchased/obtained from the Partick Thistle Ticket Office by either going into it during office hours or phoning 0141 579 1971.

Alternatively, fans may contact Partick Thistle's Disability Access Officer, Dougie McInnes, to arrange online carer tickets, email address is:

dao@ptfc.co.uk

Jackie Husband Stand Wheelchair Viewing Platform

The Jackie Husband Stand wheelchair viewing platform is located at the rear of Sections 8 and 9. This is used by home fans but away fans may also use it when the away support is in the Jackie Husband Stand. Reservation of places is essential and away wheelchair fans can check upon availability by emailing Partick Thistle's Disability Access Officer Dougie McInnes at:

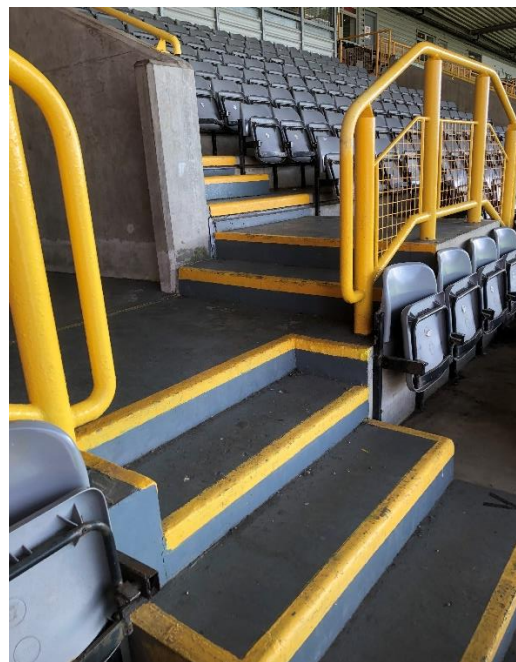
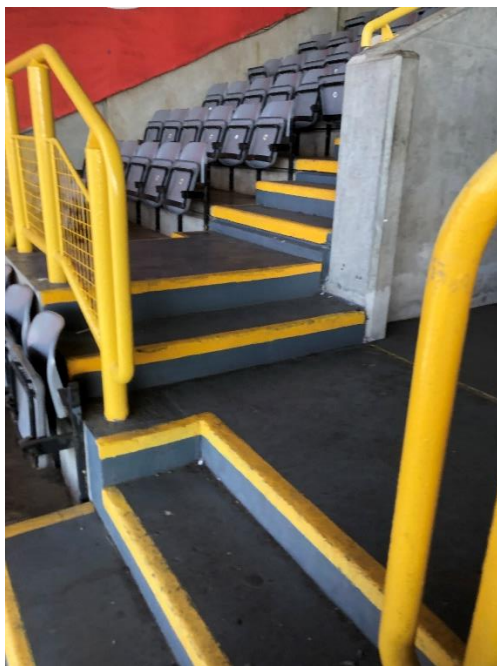
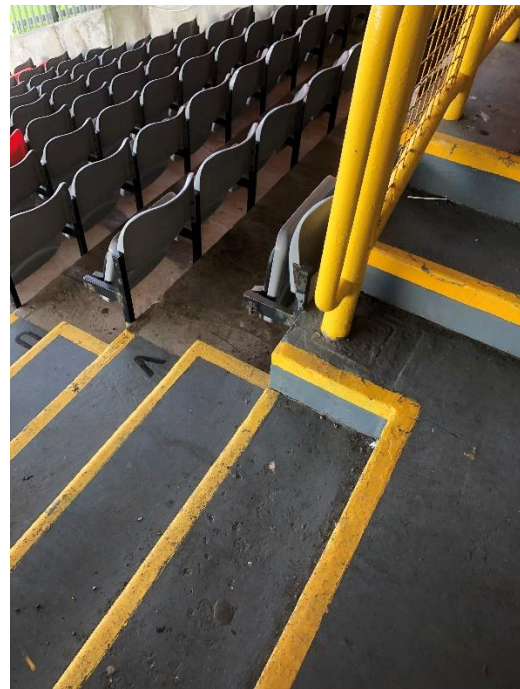
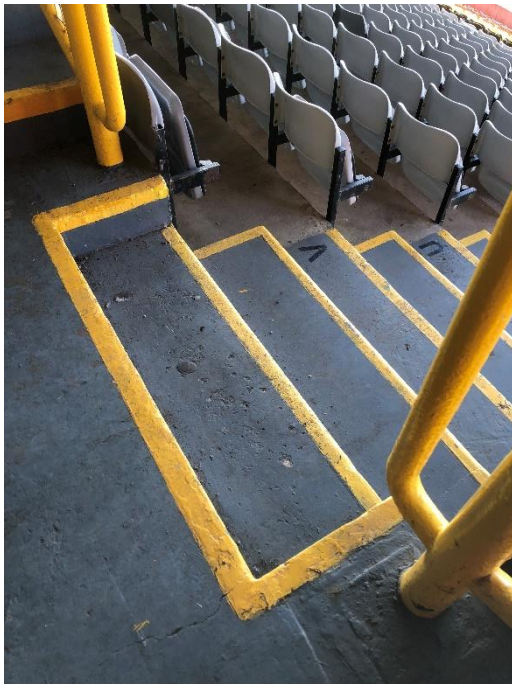
dao@ptfc.co.uk



Main Seated Area of the Jackie Husband Stand

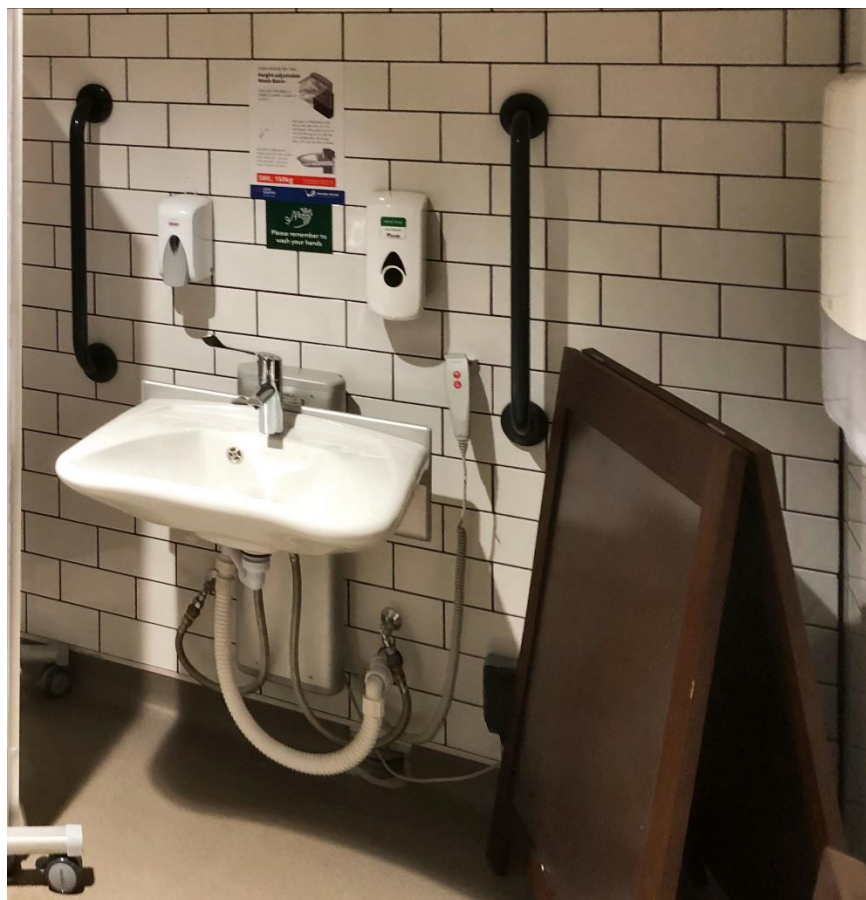
Regrettably, to access the seats in the main seating area of the Jackie Husband Stand, fans have to go up or down at least three steps.

The photographs below shows how the steps at the vomitories are arranged:



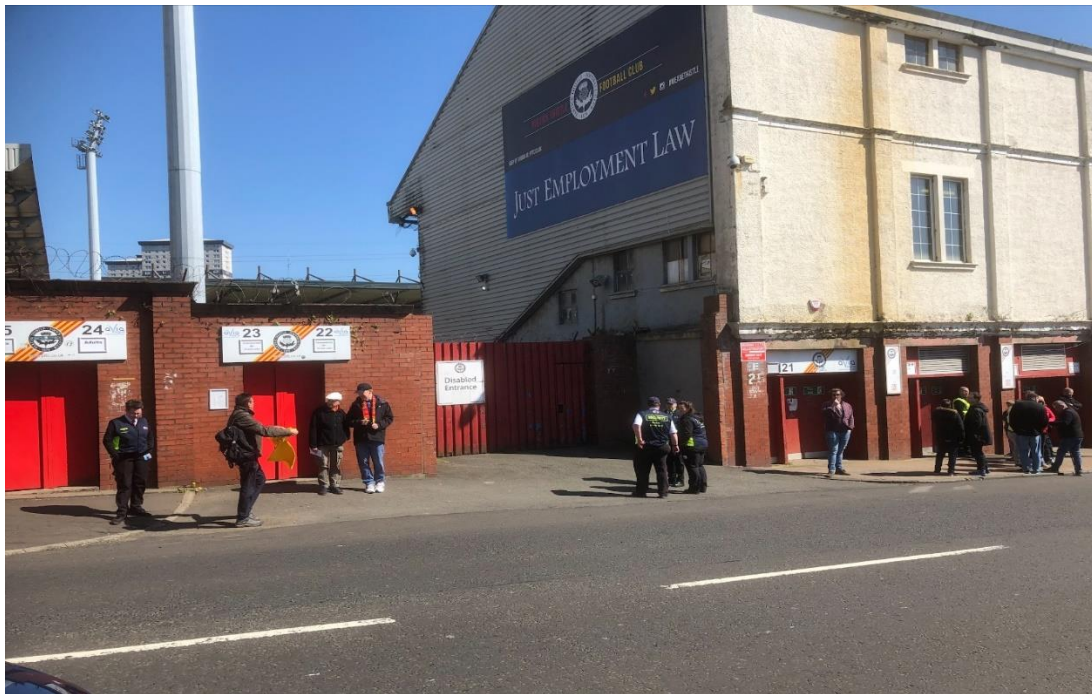
Disabled Toilet

There is a disabled toilet in Section 6 of the main concourse of the Jackie Husband Stand. The main concourse is level with the car park outside.



Front Section of the Colin Weir Stand (Old Enclosure)

The red gates of the accessible entrance on Firhill Road should be used to access the old enclosure at the front of the Colin Weir Stand, The entrance is shown below.



The photograph below shows Firhill Road with the Colin Weir Stand, looking down Firhill Road towards the city.

The John Lambie is out of sight but it is the modern stand to the left.



The old enclosure can be reached by going through the red gates of the accessible entrance.

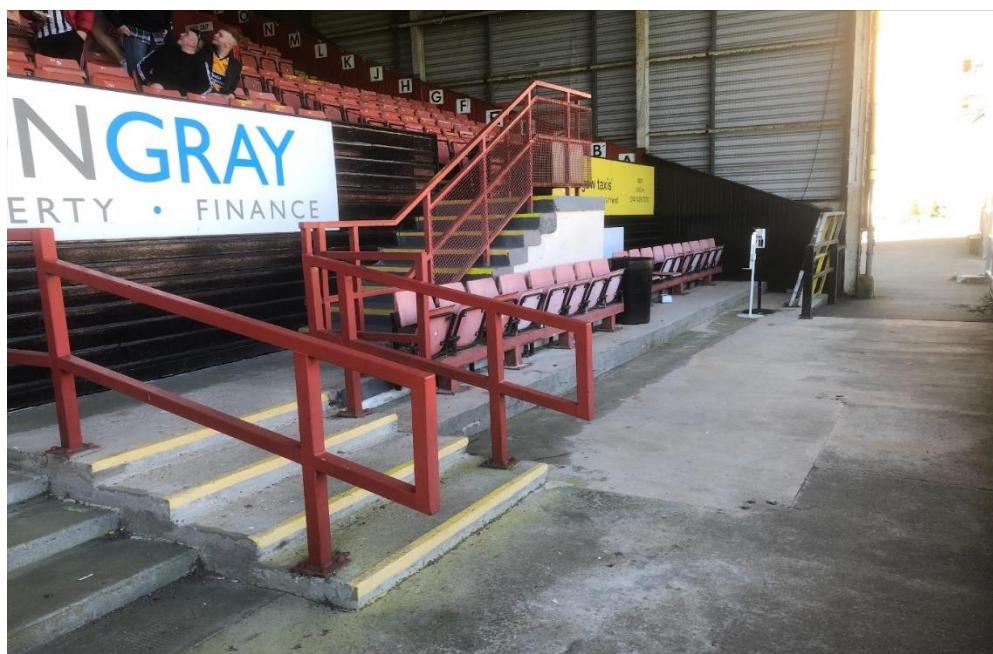
The photograph below has been taken inside the stadium. The old enclosure is to the left. The red gates of the accessible entrance are to the right.

Wheelchair users and fans with mobility issues and disabilities can view matches from the old enclosure of the Colin Weir Stand.

There is a slight slope from the gates up to the old enclosure.



The photograph below shows some of the seats in the old enclosure which can be used by carers accompanying wheelchair users:



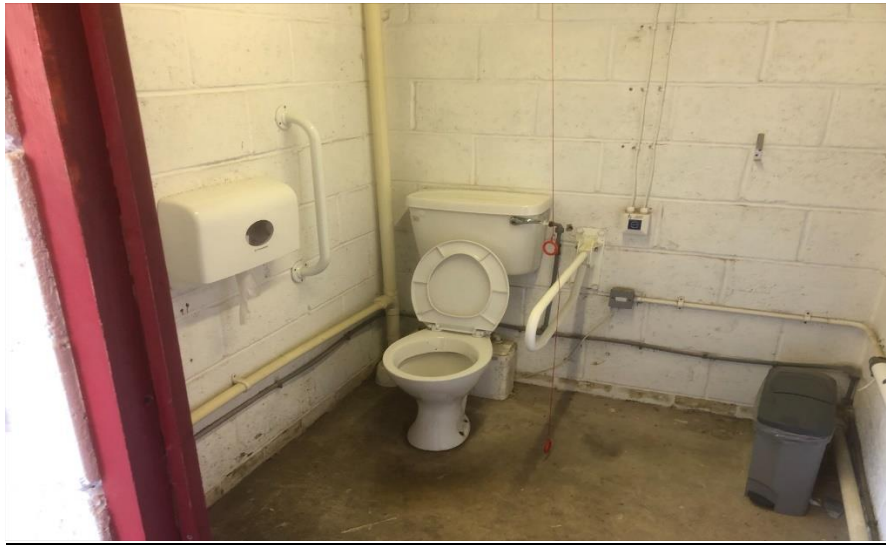
The old enclosure stretches along half the length of the Colin Weir Stand.
There are more seats further along the old enclosure.



The entrance to the disabled toilet in the old enclosure is shown below.



The photograph below shows the interior of the disabled toilet in the old enclosure.



Here are views of the pitch and the John Lambie and Jackie Husband Stands from the old enclosure of the Colin Weir Stand;



Aitken Suite Lounge

The Aitken Suite Lounge, in the Colin Weir Stand, opens to fans on match days for home and away fans.



Once you go through the red gates of the accessible entrance there is a slope up to the John Lambie Stand on the left and to the Colin Weir Stand on the right.



The Aitken Suite can be entered by an entrance on Firhill Road which has steps.

But it can also be entered by wheelchair users using the ramp shown below. It is situated just behind the red doors of the accessible entrance.

Stewards should be approached to give assistance.



Car Parking

Car parking for blue badge holders is available in the Jackie Husband Stand car park and also on Scottish Canal land on the other side of the fence. If a car park space is required then it can be requested by emailing:

dao@ptfc.co.uk

If parking in the Jackie Husband Stand car park, cars have to be parked up no later than 45 minutes before kick off i.e. by 2.15pm. The car park will close at some point to vehicular traffic, depending upon the number of fans about.

The car park can be entered from McParland Way, using the entrance opposite the old tenement buildings.

This is what you will see coming along Firhill Road from the city:



This is McParland Way:



The photograph below shows the Jackie Husband Stand car park which is level with the concourse:



If arriving less than 45 minutes before kick off then the entrance to the Jackie Husband Stand car park at the northerly end of the stadium should be used.

This can be reached by using the road which runs by the student flats, see aerial view.

If parking on Scottish Canal land then the spaces can be reached by using the road which leads up from Firhill Road past the student flats, see aerial view above.

Supporters' Bus Drop Off

Supporters' buses park in Panmure Street, a 10 minute walk for an able bodied person up the hill from the stadium.

A request can be made in advance of a match to the Firhill Safety Team for fans with mobility issues to be dropped off and picked up at the stadium.

To make a request for a drop off/pick up, Partick Thistle's Disability Access Officer should be emailed at dao@ptfc.co.uk

Further information can be obtained from:

Dougie McInnes
Disability Access Officer
Partick Thistle FC
dao@ptfc.co.uk